

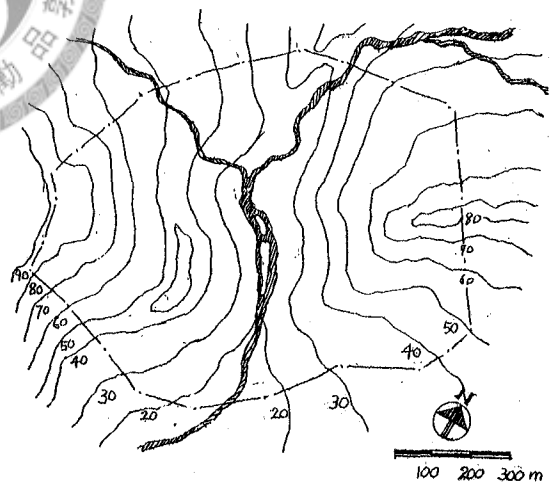
(本試卷共六題，請選擇其中四題回答，每題 25 分，多答者不給分。同時，請在答案紙的第一行註明你所回答的題目編號，如 " 回答第 1.3.4.6 題")。

1. 請敘述與比較 Duisburg-Nord Landscape Park, Ruhr(Germany) 和 Parc de la Villette, Paris(France) 之地景設計觀念 手法 以及其在當代地景史上的特殊義意. (25%)

2. 簡答下列名詞並說明其對城鄉規劃之意涵：(25%)

- (1) Heterotrophic
- (2) Succession
- (3) Diversity
- (4) Ecotone
- (5) Eutrophication

3. 敷地計畫的目的之一乃確保其安全性，具體而言，如何消滅或避免增加環境中易致災的脆弱性 (Vulnerability) 是重要的計畫觀點。現有一位於都市邊緣如圖示的一塊山坡地基地擬進行開發建設；現請就前述觀點，以及思考坡地、洪水與地震等三類自然災害對「基地」及「所在都市」可能造成的重大災情之前題下，回答下列問題：(25%)



- (1) 在規劃之前應進那些基地環境的調查與分析 (以針對前述三類災害應分別進行的調查、分析項目之方式回答之)。
 - (2) 分別針對前述三類災害可能造成的災情內容，回答在敷地計畫中，可以達成減輕環境中的易致災脆弱性、降低災害發生的對策或解決方案。
4. 有一個停車場工程將設在一個有好幾棵受保護的老樹的基地上。請建議你認為最佳保護老樹的設計以及停車場的鋪面材料與工法。(25%)

接背面

5. As part of a promotional scheme in Taipei and Kaohsiung Metropolitan Area, a company making cake mixes will award a grand prize of NT\$ 500,000 (and several other prizes) to persons sending in their names on entry blanks, with the option of also including a box top of one of the company's products. The breakdown of the 60,000 entries which they received is as shown in the following table:

	With Box Top	Without Box Top
Taipei	32,000	11,000
Kaoshiung	8,000	9,000
Total	40,000	20,000

If the winner of the grand award is chosen by lot, **T** represents the event that it will be won by an entry from Taipei, and **B** represents the event that it will be won by an entry which included a box top, please find each of the following probabilities: (25%)

- (1), $P(T)$ and $P(B)$
- (2), $P(T' \cap B')$ and $P(T \cap B)$
- (3), Please specify the conditional probability $P(T/B)$ and $P(B'/T')$, interpret their economic intuition respectively, and verify the result by using the data from the previous table.
- (4), Please discuss the **Bayes' Rule** to determine $P(B/T)$ by employing the previous results.

6. 何謂詮釋資料(meta-data)?它在地理資訊系統的重要性為何?(25%)