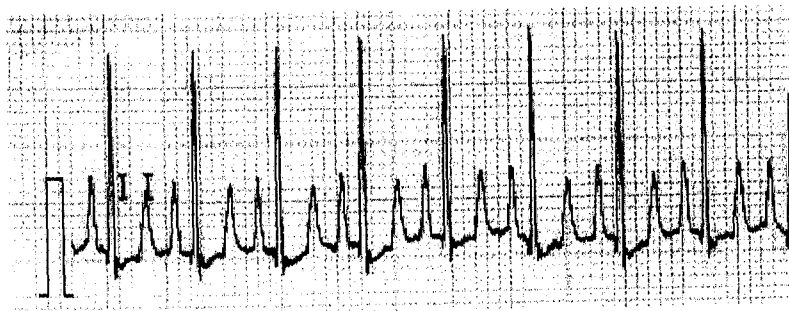


Please use English medical term to describe disease condition and procedures

1. A dog is presented with corneal edema, red eye, photophobia, and blepharospasm. (1) Please list three common causes of corneal edema in a painful eye (3 points); (2) Please describe how to make step-by-step diagnosis of corneal edema (5 points).
2. Please briefly describe the diagnostic methods and surgical management of esophageal foreign body obstruction (7 points).
3. In cryptorchidism of male dogs, what are the three common locations of the affected testicles found (3 points)? What testicular complications may be caused by the affected testicles (2 points)?
4. Please state (by writing or illustration) the correct way of placing chest tube during thoracic surgery (5 points).
5. 請詳述刷手(hand scrubbing)的程序與注意事項。(4 points)
6. 請詳述貓腹中線切開術術區剃毛、刷洗、消毒的程序與注意事項。(4 points)
7. 請配合繪圖解釋腎切開術(nephrotomy)、膀胱切開術(cystotomy)、與公犬尿道切開術(urethrotomy)之後的縫合方式與線材選擇原則。(8 points)
8. 請述犬髖關節形成不全(Hip Dysplasia, HD)的診斷方式。(5 points)
9. 請述動物後軀癱瘓之後常見的併發症。(4 points)
10. 此心電圖〈bipolar system, lead II, 紙速 25mm/sec〉錄自一 8 歲齡、8 公斤重的公犬，請問該犬的心電圖心跳為〈beat per minute〉？請敘述心電圖上的異常為何？〈10 分〉



11. 若友人欲飼養 German Shepherd Dog，向你請教該犬種常見的健康問題，你要如何向友人介紹該犬種的好發性或宿因性 (predisposing) 疾病？(10 分)

12. 請列舉 Amine Precursor Uptake Decarboxylation 類的二種腫瘤 (APUDomas)。(5 分)

13. An 8 years old intact female Shi-Tzu is presented to your clinic with signs of lethargy, anorexia, occasionally vomiting, and slight panting. $T=39.6^{\circ}\text{C}$, $P=160/\text{min}$, $R=55/\text{min}$, She has dull hair coat and is about 3% dehydration and hasn't been noticed to yield any urine for almost one day. Vaccination status is not up to date. Heat status is unclear. On commercial diet and table food.

- a. What's your differential diagnoses? (3 points)
- b. What's your diagnostic plan? Please indicate the purpose of each test and your expected result and disease indicated. (5 points) Please be cost sensitive.

14. Please describe in detail regarding canine acute renal failure

- a. possible clinical signs. (1 point)
- b. possible hematology, serum biochemistry and urinalysis finding (3 points)
- c. treatment options. (3 points)

15. Please list five common types of parental fluid (1 point), their indications (2 points), and selection principles (2 points)

16. What are the common complications for cancer chemotherapy? (2 points) How to avoid them (3 points)